

Name : _____

Date : _____

 **PHYSICAL AND CHEMICAL CHANGES**
IDENTIFICATION WORKSHEET

Are the following physical or chemical changes? Circle the correct option.

1. Is crushing charcoal into powder a physical or a chemical change?

- Physical Change
- Chemical Change

2. Is boiling a potato a physical or a chemical change?

- Physical Change
- Chemical Change

3. Is burning paper a physical or a chemical change?

- Physical Change
- Chemical Change

4. Cleaning a painted surface with acid.

- Physical Change
- Chemical Change

5. Polishing a marble tile.

- Physical Change
- Chemical Change

6. Bending a metal pipe.

- Physical Change
- Chemical Change

7. Adding iron filings to sand.

- Physical Change
- Chemical Change

8. Adding lemon juice to limestone.

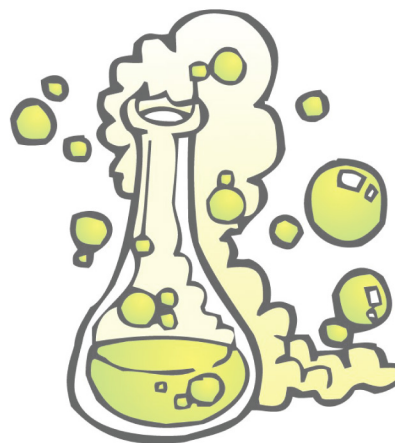
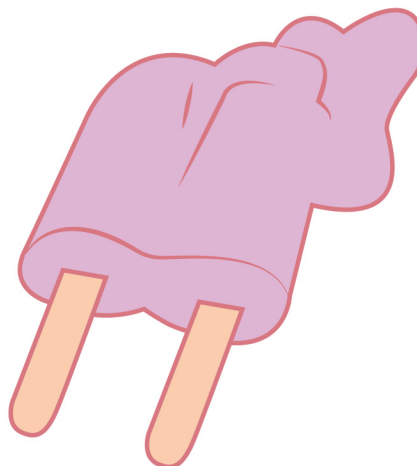
- Physical Change
- Chemical Change

9. Acid rain continuously falling on a rock surface could cause a _____.

- Physical Change
- Chemical Change

10. Water falls into a crack in a rock and later freezes. The expanded ice cracks the rock. What kind of change is this?

- Physical Change
- Chemical Change



Name : _____

Date : _____



PHYSICAL AND CHEMICAL CHANGES

IDENTIFICATION WORKSHEET

Answers

Are the following physical or chemical changes? Circle the correct option.

1. Is crushing charcoal into powder a physical or a chemical change?

- Physical Change
- Chemical Change

2. Is boiling a potato a physical or a chemical change?

- Physical Change
- Chemical Change

3. Is burning paper a physical or a chemical change?

- Physical Change
- Chemical Change

4. Cleaning a painted surface with acid.

- Physical Change
- Chemical Change

5. Polishing a marble tile.

- Physical Change
- Chemical Change

6. Bending a metal pipe.

- Physical Change
- Chemical Change

7. Adding iron filings to sand.

- Physical Change
- Chemical Change

8. Adding lemon juice to limestone.

- Physical Change
- Chemical Change

9. Acid rain continuously falling on a rock surface could cause a _____.

- Physical Change
- Chemical Change

10. Water falls into a crack in a rock and later freezes. The expanded ice cracks the rock. What kind of change is this?

- Physical Change
- Chemical Change

